

## GEM MINI TRACK INSTALLATION INSTRUCTIONS

---

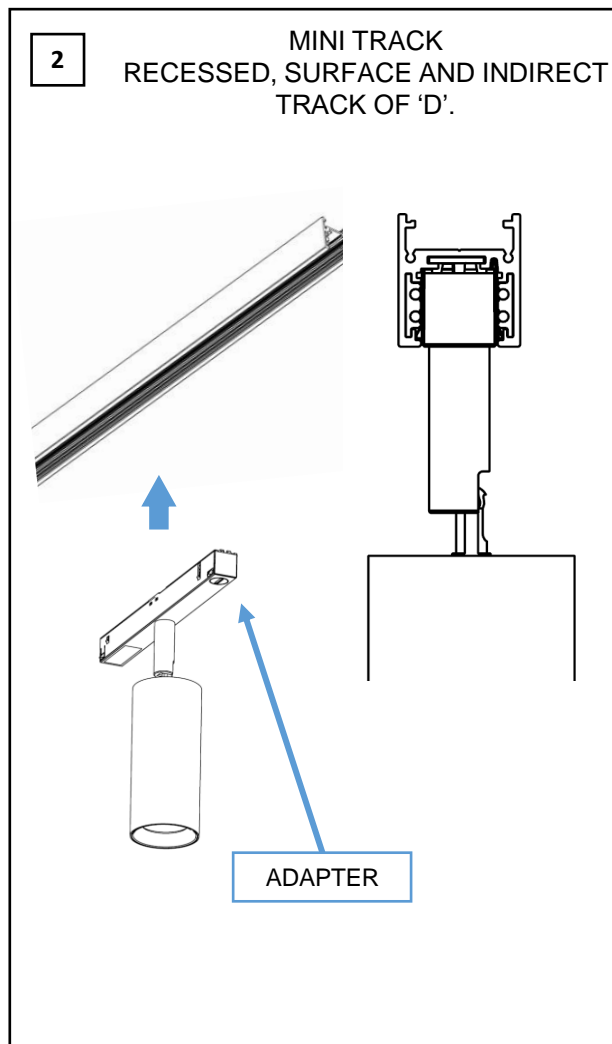
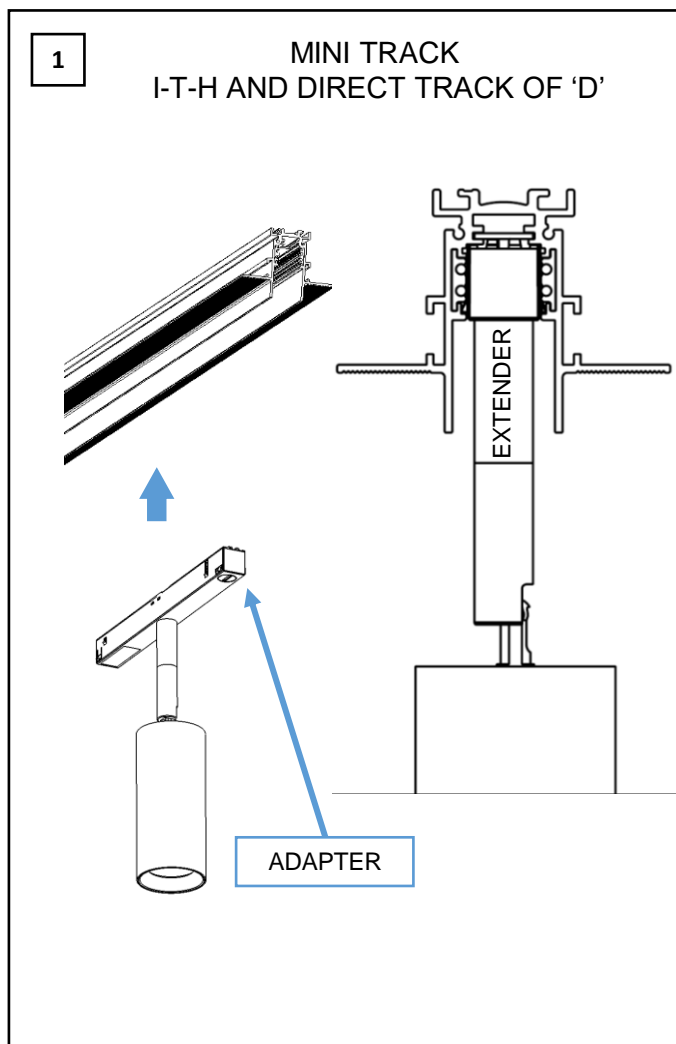


---

**WARNING - RISK OF FIRE AND ELECTRICAL SHOCK. FIXTURE MUST BE INSTALLED BY A QUALIFIED ELECTRICIAN ONLY. FIXTURE IS INTENDED FOR INSTALLATION IN ACCORDANCE WITH THE NATIONAL ELECTRICAL CODE, LOCAL AND FEDERAL SPECIFICATIONS. DISCONNECT POWER AT ELECTRICAL PANEL BEFORE SERVICING. RETAIN THESE INSTRUCTIONS FOR MAINTENANCE REFERENCE.**

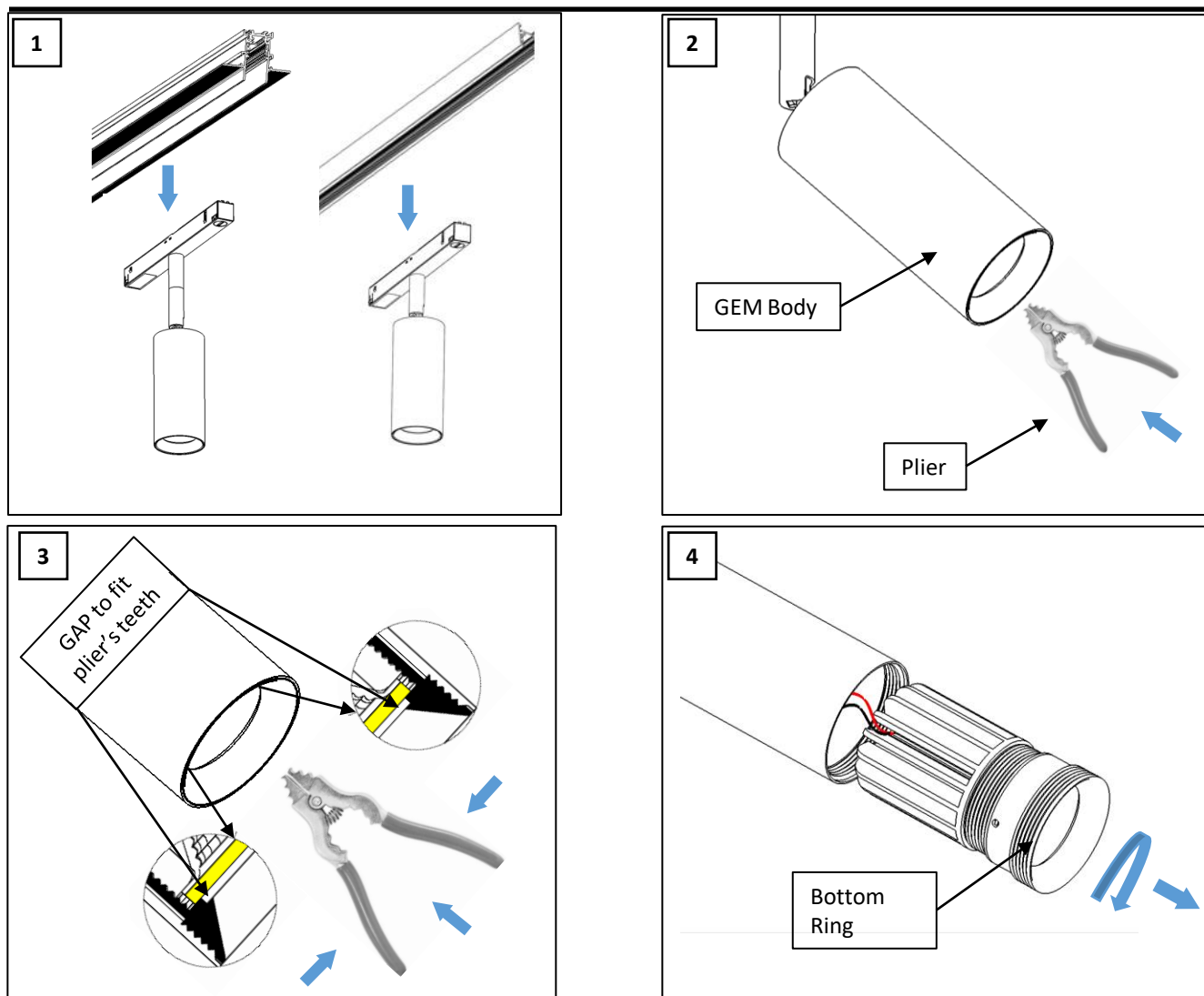
MATERIALS USED FOR CEILING FIXATION SHOULD CONFORM TO THE RELEVANT BUILDING REGULATIONS. IT IS ESSENTIAL TO COVER THE ENDS OF THE TRACK WITH END COVERS OR PROTECTIVE CAPS.

# FIXTURE INSTALLATION



1. MAKE SURE THE TRACK ADAPTER IS PARALLEL TO THE MINI-TRACK.
2. INSERT THE ADAPTER IN THE TRACK. MAKE SURE IT IS PERFECTLY ALIGNED AND YOU HEAR A CLICK NOISE. IT SHOULD BE PERFECTLY ALIGNED AS SHOWN IN (FIGURE 1 & 2)
3. REPEAT STEPS FOR ALL THE MINI TRACK LIGHTS TO INSTALL.
4. TURN POWER BACK ON AND IF LIGHT IS NOT ON, ROTATE THE ORIENTATION OF THE ADAPTER AND INSERT BACK IN THE TRACK.
5. ORIENT THE TRACK LIGHTS TO THE DESIRED LOCATION.

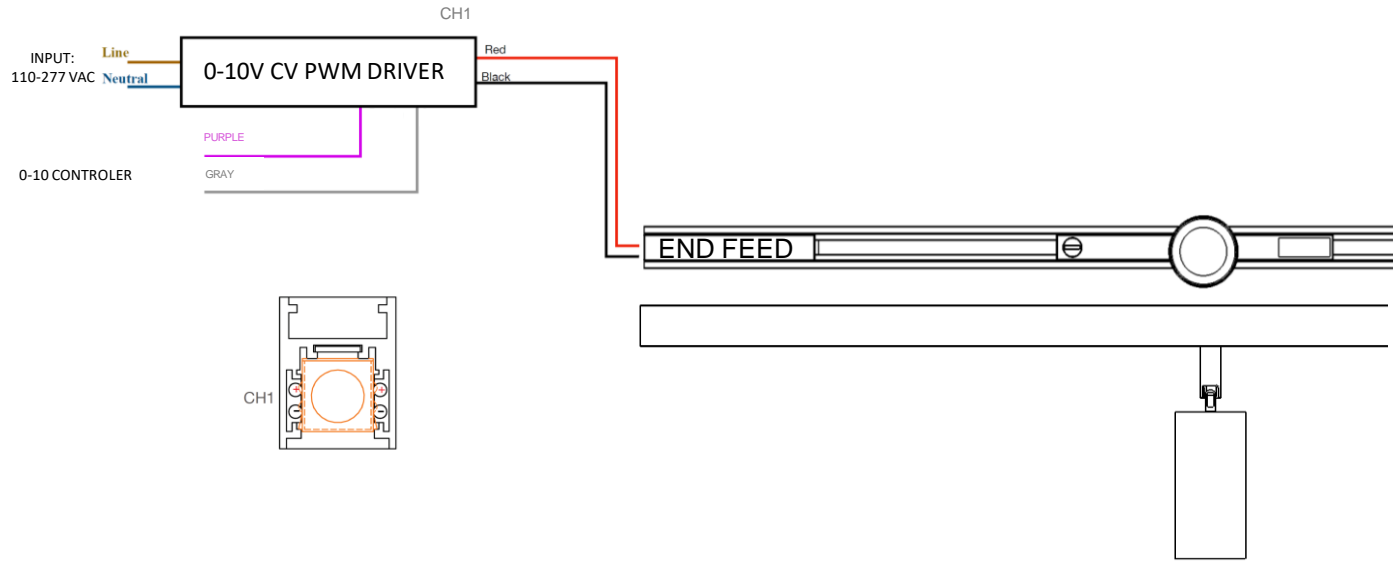
# ACCESSORIES INSTALLATION



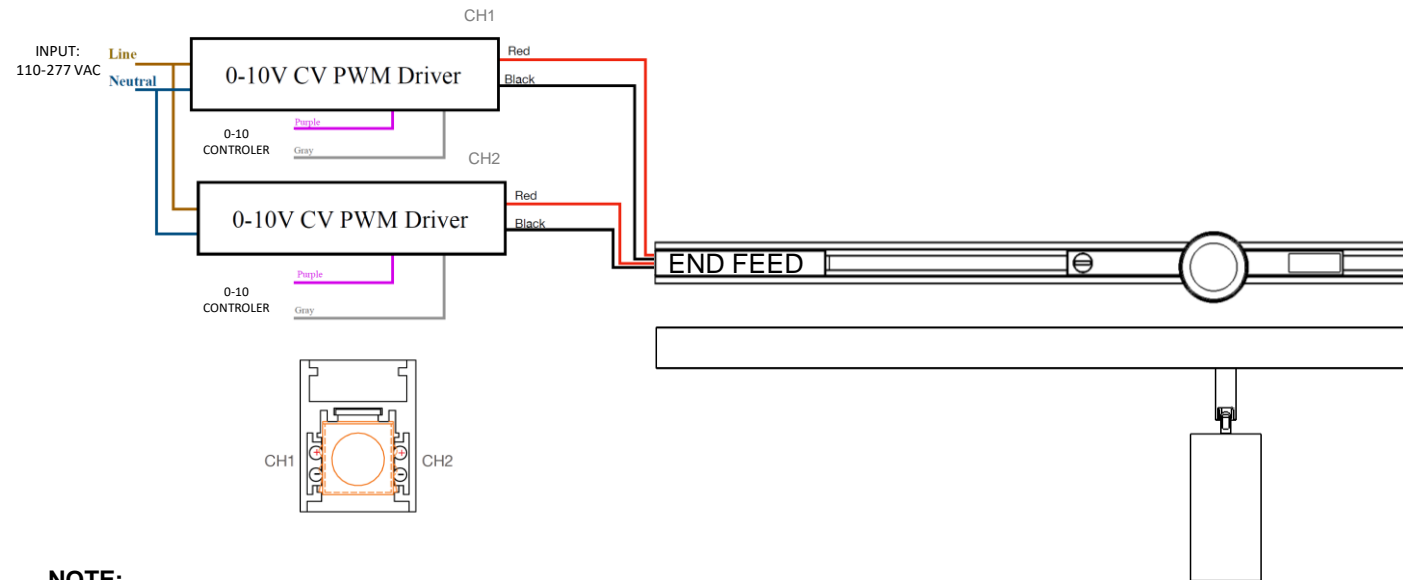
1. SWITCH OFF THE POWER SUPPLY BEFORE CHANGING THE ACCESSORIES.
2. PULL DOWN THE FIXTURE FROM THE TRACK. (FIGURE 1).
3. USE A REVERSE PLIER (CHAIN PLIER) TO UNSCREW THE BOTTOM RING FROM THE GEM BODY. (FIGURE 2)
4. ENGAGE THE TEETH OF PLIER IN THE GAP BETWEEN THE GLASS (YELLOW) AND THE BOTTOM RING (BLACK) AS SHOWN WITH ARROWS IN (FIGURE 3).
5. GET A GOOD GRIP AND ROTATE THE PLIER TO UNSCREW THE BOTTOM RING. (FIGURE 4).
6. NOW OPEN THE BOTTOM RING AND ADD THE ACCESSORIES.
7. ONCE YOU HAVE CHANGED THE ACCESSORIES, SCREW BACK THE BOTTOM RING TO THE GEM BODY. PUSH BACK THE FIXTURE IN THE MINI TRACK.

# WIRING DIAGRAM

## • 0-10V, Dali, Bluetooth ONE CIRCUIT



## • 0-10V, Dali, Bluetooth TWO CIRCUIT



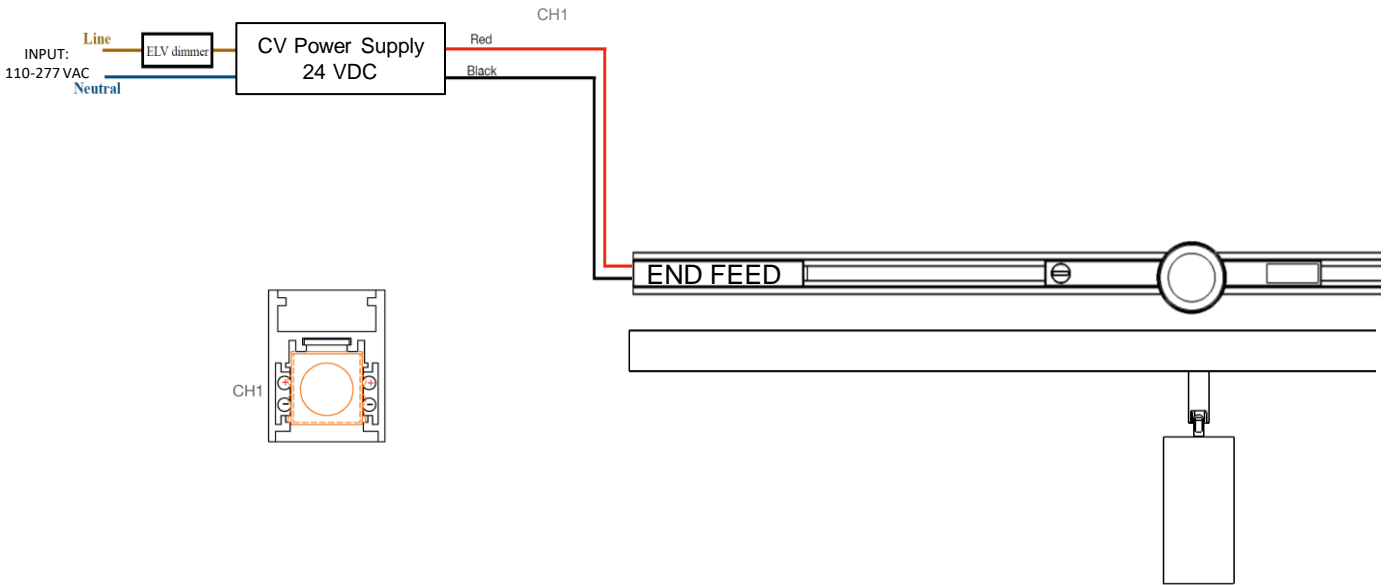
### NOTE:

MAXIMUM NUMBER OF THE LIGHTS CAN BE CONNECTED TO EACH CHANNEL DEPEND ON THE WATTAGE OF THE LIGHT. 25 LIGHTS AT 3W, 15 LIGHTS AT 5W, 10 LIGHTS AT 7W AND 8 LIGHTS AT 9W.

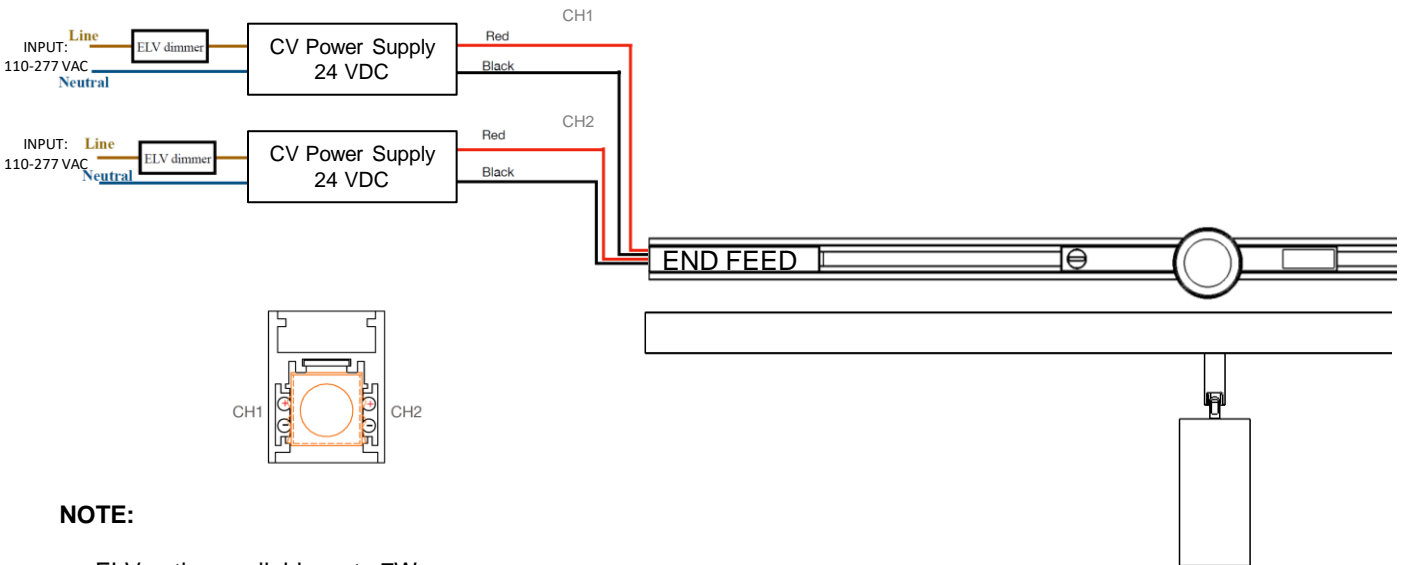
*\*The manufacturer reserves the right to change or modify the design, dimensions and specifications at anytime without notice. The manufacturer accepts no liability for consequential damage which is occasioned to the user base on the data provided.*

# WIRING DIAGRAM

## • ELV, Dali, Bluetooth ONE CIRCUIT



## • ELV, Dali, Bluetooth TWO CIRCUIT



### NOTE:

- ELV option available up to 7W.
- MAXIMUM NUMBER OF THE LIGHTS CAN BE CONNECTED TO EACH CHANNEL DEPEND ON THE WATTAGE OF THE LIGHT. 25 LIGHTS AT 3W, 15 LIGHTS AT 5W, 10 LIGHTS AT 7W AND 8 LIGHTS AT 9W.

*\*The manufacturer reserves the right to change or modify the design, dimensions and specifications at anytime without notice. The manufacturer accepts no liability for consequential damage which is occasioned to the user base on the data provided.*